

Arbutus Rd between Hobbs St and Telegraph Bay Rd

March 03, 2020 To March 05, 2020



The data presented here is for information purposes only and should not be considered authoritative for construction, geotechnical, engineering, navigational, legal, or other site-specific uses. The information shared is owned by the Transportation Division of the Engineering Department at the District of Saanich. Accuracy is not guaranteed.

Start Date: 2-Mar-20
 Start Time: 0:03
 Station ID: C0002-01

Location 1: Arbutus Rd between Hobbs St and Telegraph Bay Rd

Note:

DATE:	March 2, 2020		March 3, 2020		March 4, 2020		March 5, 2020		March 6, 2020		WK AVG		WK AVG	HOURLY
	MON		TUE		WED		THURS		FRI				CH 1+2	%
Time:	NB	SB	NB	SB	NB	SB	NB	SB	NB	SB	NB	SB		
12-1 AM			6	3	5	4	3	2			5	3	8	0.4%
1-2 AM			1	1	2	2	4	0			2	1	3	0.2%
2-3 AM			0	4	2	1	0	2			1	2	3	0.1%
3-4 AM			1	1	1	1	2	2			1	1	3	0.1%
4-5 AM			5	0	4	0	2	1			4	0	4	0.2%
5-6 AM			8	3	5	3	7	3			7	3	10	0.4%
6-7 AM			16	7	25	11	24	15			22	11	33	1.5%
7-8 AM			67	44	60	41	68	40			65	42	107	5.0%
8-9 AM			121	75	114	77	129	89			121	80	202	9.4%
9-10 AM			70	56	84	76	63	63			72	65	137	6.4%
10-11 AM			73	52	98	69	81	67			84	63	147	6.8%
11-12 PM			73	60	84	81	91	60			83	67	150	7.0%
12-1 PM			96	77	79	74	85	74			87	75	162	7.5%
1-2 PM			78	57	99	74	89	73			89	68	157	7.3%
2-3 PM			91	80	101	61	76	62			89	68	157	7.3%
3-4 PM			81	93	106	97	81	106			89	99	188	8.7%
4-5 PM			89	79	88	78	84	86			87	81	168	7.8%
5-6 PM			84	76	99	86	81	79			88	80	168	7.8%
6-7 PM			56	70	48	53	42	53			49	59	107	5.0%
7-8 PM			36	36	27	37	45	47			36	40	76	3.5%
8-9 PM			28	31	37	38	31	31			32	33	65	3.0%
9-10 PM			28	26	20	33	26	36			25	32	56	2.6%
10-11 PM			11	14	10	18	11	18			11	17	27	1.3%
11-12 AM			11	8	8	9	6	6			8	8	16	0.7%
LANES			1130	953	1206	1024	1131	1015			1156	997	2153	100.0%
TOTAL			2083		2230		2146				2160			
	MON		TUE		WED		THURS		FRI		WK AVG			

PEAK HOUR					TOTAL VEHICALS-PEAK PERIODS		2 HOUR PEAK INTERVALS					
MAX. 7 - 9 am PEAK HOUR	202	⇒	9.4%	between	8-9 AM	956	⇒	6 HR TOTAL	2 HR AM (7 - 9 AM)			
MAX. 7 - 11 am PEAK HOUR	202	⇒	9.4%	between	8-9 AM	645	⇒	4 HR TOTAL	VEH / HR	VEH / 2HR	2 HR %	
									7-8 AM	107	308	14.3%
									8-9 AM	202		
MAX. 11 am - 1 pm PEAK HOUR	162	⇒	7.5%	between	12-1 PM	24 HOUR FACTORS						
MAX. 11 am - 3 pm PEAK HOUR	162	⇒	7.5%	between	12-1 PM							
MAX. 4 - 6 pm PEAK HOUR	168	⇒	7.8%	between	5-6 PM							
MAX. 3 - 6 pm PEAK HOUR	188	⇒	8.7%	between	3-4 PM	2.25	⇒	6-24 HR FACT.	2 HR NOON (11 - 1 PM)			
						3.34	⇒	4-24 HR FACT.	VEH / HR	VEH / 2HR	2 HR %	
									11-12 PM	150	311	14.5%
									12-1 PM	162		
									2 HR PM (4 - 6 PM)			
									VEH / HR	VEH / 2HR	2 HR %	
									4-5 PM	168	336	15.6%
									5-6 PM	168		

Arbutus Rd between Hobbs St and Telegraph Bay Rd

Northbound

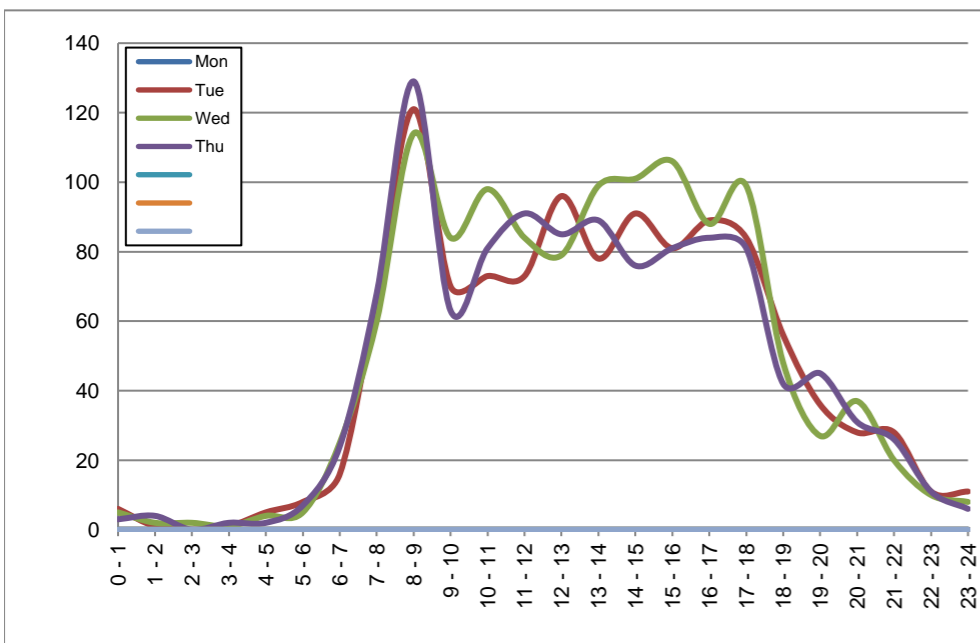
March 2, 2020 to March 5, 2020

Hourly Volumes

Time Period	Mon Mar 2	Tue Mar 3	Wed Mar 4	Thu Mar 5
0 - 1		6	5	3
1 - 2		1	2	4
2 - 3		0	2	0
3 - 4		1	1	2
4 - 5		5	4	2
5 - 6		8	5	7
6 - 7		16	25	24
7 - 8		67	60	68
8 - 9		121	114	129
9 - 10		70	84	63
10 - 11		73	98	81
11 - 12		73	84	91
12 - 13		96	79	85
13 - 14		78	99	89
14 - 15		91	101	76
15 - 16		81	106	81
16 - 17		89	88	84
17 - 18		84	99	81
18 - 19		56	48	42
19 - 20		36	27	45
20 - 21		28	37	31
21 - 22		28	20	26
22 - 23		11	10	11
23 - 24		11	8	6
Day Total		1130	1206	1131

15-Minute Volumes

Time Start	Mon Mar 2	Tue Mar 3	Wed Mar 4	Thu Mar 5	
0:00		2	2	0	
0:15		1	3	2	
0:30		0	0	0	
0:45		3	0	1	
1:00		1	1	3	
1:15		0	1	0	
1:30		0	0	0	
1:45		0	0	1	
2:00		0	0	0	
2:15		0	2	0	
2:30		0	0	0	
2:45		0	0	0	
3:00		0	1	0	
3:15		1	0	1	
3:30		0	0	1	
3:45		0	0	0	
4:00		0	0	0	
4:15		1	0	1	
4:30		2	1	1	
4:45		2	3	0	
5:00		3	1	1	
5:15		1	0	1	
5:30		2	3	1	
5:45		2	1	4	
6:00		2	4	2	
6:15		0	4	6	
6:30		6	8	8	
6:45		8	9	8	
7:00		8	3	9	
7:15		16	11	17	
7:30		17	25	21	
7:45		26	21	21	
8:00		25	24	32	
8:15		40	32	41	
8:30		25	22	30	
8:45		31	36	26	
9:00		20	25	11	
9:15		21	15	12	
9:30		11	22	18	
9:45		18	22	22	
10:00		14	21	23	
10:15		23	24	23	
10:30		19	31	12	
10:45		17	22	23	
11:00		20	16	21	
11:15		19	23	24	
11:30		14	25	25	
11:45		20	20	21	
12:00			25	24	21
12:15			18	19	22
12:30			20	21	21
12:45			33	15	21
13:00			20	24	21
13:15			18	23	18
13:30			22	34	29
13:45			18	18	21
14:00			20	21	14
14:15			22	18	22
14:30			27	24	21
14:45			22	38	19
15:00			26	24	21
15:15			18	30	18
15:30			15	28	26
15:45			22	24	16
16:00			19	25	20
16:15			18	23	22
16:30			22	20	26
16:45			30	20	16
17:00			21	30	17
17:15			21	27	17
17:30			21	20	26
17:45			21	22	21
18:00			13	9	8
18:15			15	16	9
18:30			16	11	16
18:45			12	12	9
19:00			12	13	15
19:15			14	4	15
19:30			7	5	6
19:45			3	5	9
20:00			8	12	10
20:15			5	9	3
20:30			9	10	11
20:45			6	6	7
21:00			8	5	6
21:15			9	6	7
21:30			5	8	10
21:45			6	1	3
22:00			1	2	4
22:15			4	3	2
22:30			4	3	1
22:45			2	2	4
23:00			3	0	0
23:15			4	4	1
23:30			2	2	2
23:45			2	2	3



Site notes:

Arbutus Rd between Hobbs St and Telegraph Bay Rd

Southbound

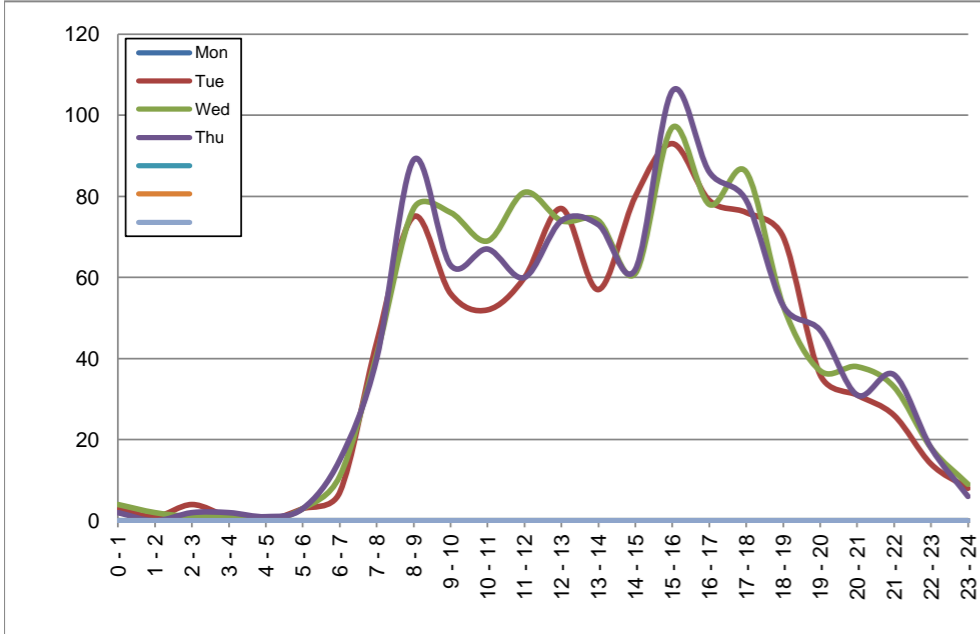
March 2, 2020 to March 5, 2020

Hourly Volumes

Time Period	Mon	Tue	Wed	Thu			
	Mar 2	Mar 3	Mar 4	Mar 5			
0 - 1		3	4	2			
1 - 2		1	2	0			
2 - 3		4	1	2			
3 - 4		1	1	2			
4 - 5		0	0	1			
5 - 6		3	3	3			
6 - 7		7	11	15			
7 - 8		44	41	40			
8 - 9		75	77	89			
9 - 10		56	76	63			
10 - 11		52	69	67			
11 - 12		60	81	60			
12 - 13		77	74	74			
13 - 14		57	74	73			
14 - 15		80	61	62			
15 - 16		93	97	106			
16 - 17		79	78	86			
17 - 18		76	86	79			
18 - 19		70	53	53			
19 - 20		36	37	47			
20 - 21		31	38	31			
21 - 22		26	33	36			
22 - 23		14	18	18			
23 - 24		8	9	6			
Day Total		953	1024	1015			

15-Minute Volumes

Time Start	Mon	Tue	Wed	Thu				Time Start	Mon	Tue	Wed	Thu			
	Mar 2	Mar 3	Mar 4	Mar 5					Mar 2	Mar 3	Mar 4	Mar 5			
0:00		0	2	2				12:00		23	19	19			
0:15		1	0	0				12:15		19	21	15			
0:30		1	0	0				12:30		18	19	20			
0:45		1	2	0				12:45		17	15	20			
1:00		1	0	0				13:00		14	21	20			
1:15		0	1	0				13:15		15	14	14			
1:30		0	1	0				13:30		16	24	19			
1:45		0	0	0				13:45		12	15	20			
2:00		1	0	0				14:00		14	10	21			
2:15		1	0	1				14:15		17	16	19			
2:30		1	0	0				14:30		17	16	8			
2:45		1	1	1				14:45		32	19	14			
3:00		0	1	0				15:00		27	20	25			
3:15		0	0	1				15:15		24	19	31			
3:30		1	0	0				15:30		18	28	24			
3:45		0	0	1				15:45		24	30	26			
4:00		0	0	0				16:00		16	17	18			
4:15		0	0	1				16:15		17	14	21			
4:30		0	0	0				16:30		30	22	26			
4:45		0	0	0				16:45		16	25	21			
5:00		0	0	0				17:00		22	23	18			
5:15		0	1	2				17:15		23	29	24			
5:30		2	0	1				17:30		18	16	19			
5:45		1	2	0				17:45		13	18	18			
6:00		3	3	3				18:00		20	13	12			
6:15		0	1	4				18:15		22	18	23			
6:30		2	3	2				18:30		15	14	8			
6:45		2	4	6				18:45		13	8	10			
7:00		9	5	2				19:00		8	14	9			
7:15		9	15	10				19:15		13	8	10			
7:30		14	11	15				19:30		8	9	16			
7:45		12	10	13				19:45		7	6	12			
8:00		15	15	24				20:00		5	11	8			
8:15		15	22	10				20:15		7	9	6			
8:30		24	19	26				20:30		12	5	5			
8:45		21	21	29				20:45		7	13	12			
9:00		11	19	13				21:00		4	16	14			
9:15		19	19	19				21:15		7	6	10			
9:30		18	15	17				21:30		8	5	6			
9:45		8	23	14				21:45		7	6	6			
10:00		11	20	21				22:00		3	5	6			
10:15		17	18	13				22:15		6	5	3			
10:30		11	12	18				22:30		3	3	7			
10:45		13	19	15				22:45		2	5	2			
11:00		15	16	14				23:00		2	1	1			
11:15		16	30	17				23:15		2	4	1			
11:30		14	16	12				23:30		2	1	3			
11:45		15	19	17				23:45		2	3	1			



Site notes:

Vehicle Speed Summary

Saanich Engineering Department

Count Id: C0002-01

Filename: Arbutus Rd between Hobbs St and Telegraph Bay Rd-Mar-2020.xlsm

Location: Arbutus Rd between Hobbs St and Telegraph Bay Rd

Note:

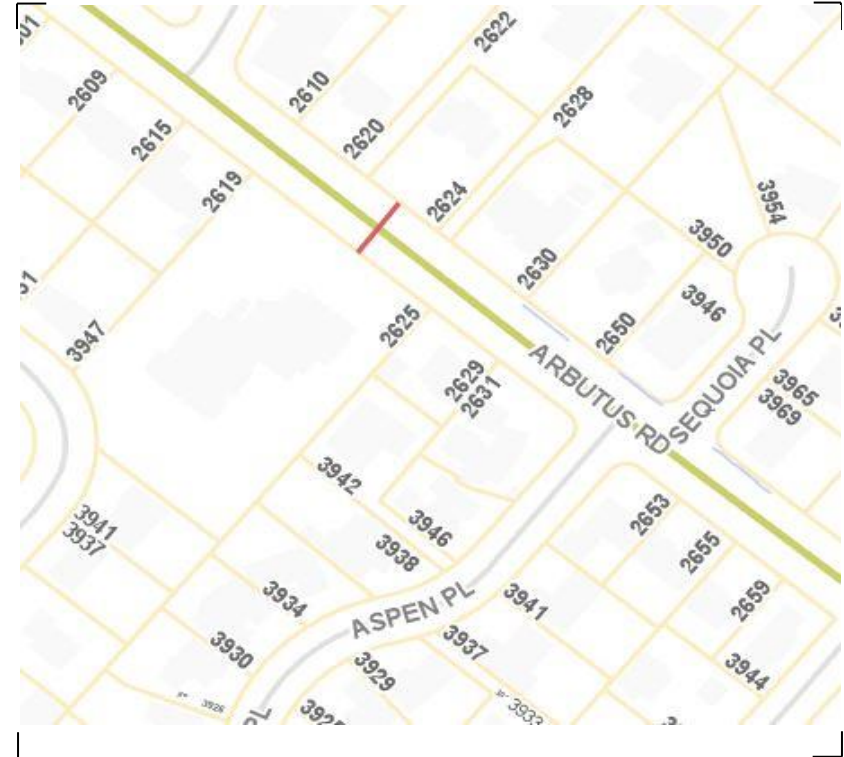
Direction: **North-South**

Dates: **March 03, 2020 To March 05, 2020**

Filtered data

AVG. SPEED	30 mph	49 km/h
50 % SPEED	31 mph	50 km/h
85 % SPEED	36 mph	57 km/h
95 % SPEED	39 mph	62 km/h

Location Map



Arbutus Rd between Hobbs St and Telegraph Bay Rd

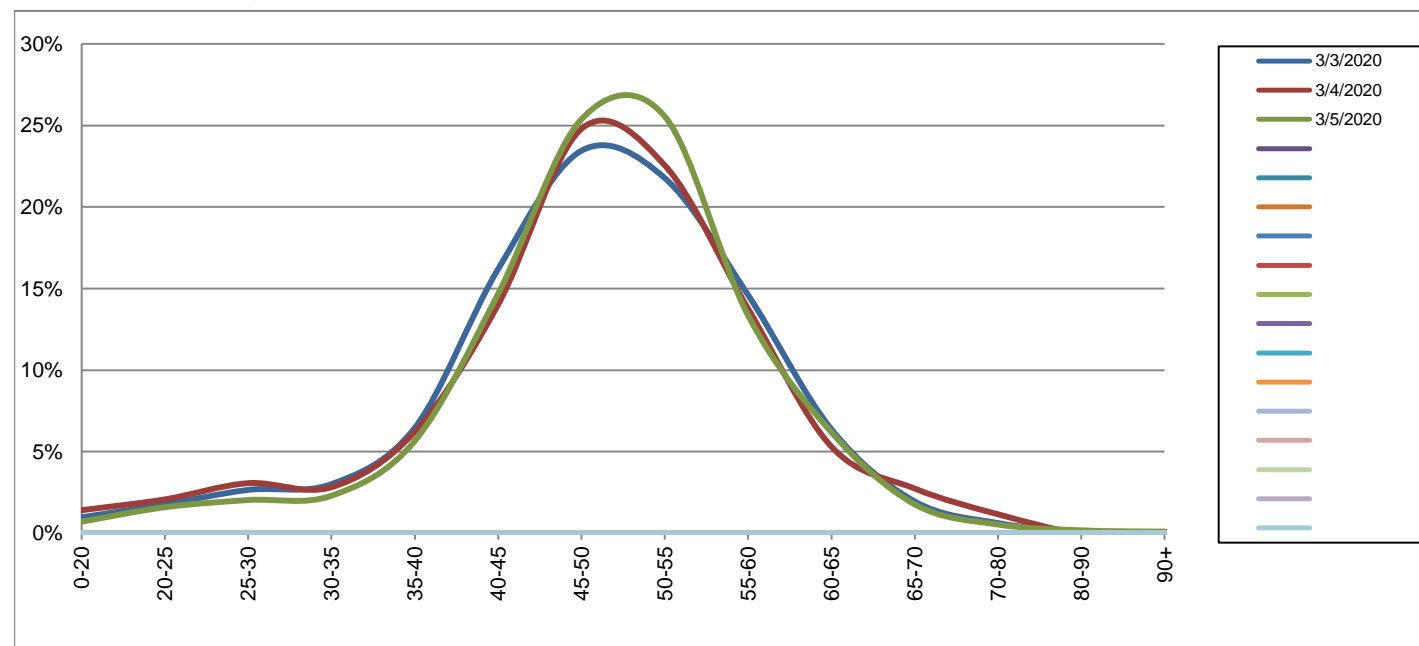
Northbound

March 3, 2020 to March 5, 2020

Daily Speed Bin Percentages															Daily Speed Bin Volumes														Total	Avg.
Bin #	1	2	3	4	5	6	7	8	9	10	11	12	13	14	1	2	3	4	5	6	7	8	9	10	11	12	13	14	Volume	Speed
Bin Speeds	0-20	20-25	25-30	30-35	35-40	40-45	45-50	50-55	55-60	60-65	65-70	70-80	80-90	90+	0-20	20-25	25-30	30-35	35-40	40-45	45-50	50-55	55-60	60-65	65-70	70-80	80-90	90+		
3/3/2020	1.0%	1.8%	2.7%	3.0%	6.5%	16.2%	23.5%	21.8%	14.6%	6.4%	1.9%	0.6%	0.1%	0.1%	11	20	30	34	73	183	265	246	165	72	22	7	1	1	1130	48
3/4/2020	1.4%	2.1%	3.1%	2.8%	6.2%	14.0%	24.8%	22.6%	13.8%	5.3%	2.7%	1.2%	0.0%	0.1%	17	25	37	34	75	169	299	272	166	64	33	14	0	1	1206	48
3/5/2020	0.7%	1.6%	2.0%	2.3%	5.7%	14.7%	25.4%	25.6%	13.4%	6.2%	1.8%	0.5%	0.2%	0.1%	8	18	23	26	64	166	287	289	151	70	20	6	2	1	1131	49
Total	1.0%	1.8%	2.6%	2.7%	6.1%	14.9%	24.5%	23.3%	13.9%	5.9%	2.2%	0.8%	0.1%	0.1%	36	63	90	94	212	518	851	807	482	206	75	27	3	3	3467	49

Speed Data Summary

Bin #	1	2	3	4	5	6	7	8	9	10	11	12	13	14	Total
Bin Speeds	0-20	20-25	25-30	30-35	35-40	40-45	45-50	50-55	55-60	60-65	65-70	70-80	80-90	90+	
Survey Total	36	63	90	94	212	518	851	807	482	206	75	27	3	3	3467
% Total	1.0%	1.8%	2.6%	2.7%	6.1%	14.9%	24.5%	23.3%	13.9%	5.9%	2.2%	0.8%	0.1%	0.1%	100%
Accumulated %	1.0%	2.9%	5.5%	8.2%	14.3%	29.2%	53.8%	77.0%	90.9%	96.9%	99.0%	99.8%	99.9%	100%	
Inverse Accum. %	99.0%	97.1%	94.5%	91.8%	85.7%	70.8%	46.2%	23.0%	9.1%	3.1%	1.0%	0.2%	0.1%	0.0%	
Average Speed	49 KM/H														



Site notes:

Arbutus Rd between Hobbs St and Telegraph Bay Rd

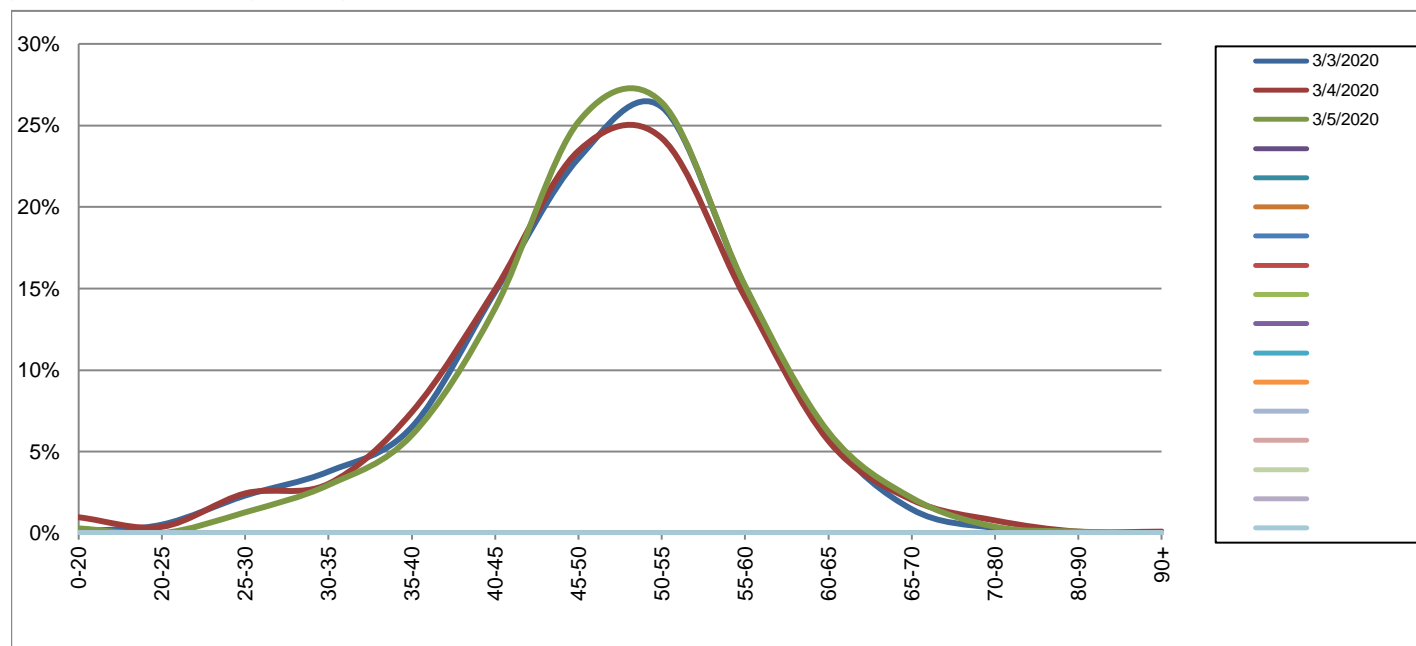
Southbound

March 3, 2020 to March 5, 2020

Daily Speed Bin Percentages															Daily Speed Bin Volumes														Total	Avg.
Bin #	1	2	3	4	5	6	7	8	9	10	11	12	13	14	1	2	3	4	5	6	7	8	9	10	11	12	13	14	Volume	Speed
Bin Speeds	0-20	20-25	25-30	30-35	35-40	40-45	45-50	50-55	55-60	60-65	65-70	70-80	80-90	90+	0-20	20-25	25-30	30-35	35-40	40-45	45-50	50-55	55-60	60-65	65-70	70-80	80-90	90+		
3/3/2020	0.1%	0.5%	2.3%	3.8%	6.5%	14.8%	23.0%	26.1%	15.1%	6.0%	1.5%	0.3%	0.0%	0.0%	1	5	22	36	62	141	219	249	144	57	14	3	0	0	953	49
3/4/2020	1.0%	0.4%	2.4%	3.0%	7.4%	14.9%	23.4%	24.2%	14.5%	5.7%	2.1%	0.8%	0.1%	0.1%	10	4	25	31	76	153	240	248	148	58	21	8	1	1	1024	49
3/5/2020	0.3%	0.0%	1.3%	3.0%	6.0%	13.8%	25.2%	26.4%	15.2%	6.2%	2.2%	0.4%	0.1%	0.0%	3	0	13	30	61	140	256	268	154	63	22	4	1	0	1015	50
Total	0.5%	0.3%	2.0%	3.2%	6.7%	14.5%	23.9%	25.6%	14.9%	5.9%	1.9%	0.5%	0.1%	0.0%	14	9	60	97	199	434	715	765	446	178	57	15	2	1	2992	49

Speed Data Summary

Bin #	1	2	3	4	5	6	7	8	9	10	11	12	13	14	Total
Bin Speeds	0-20	20-25	25-30	30-35	35-40	40-45	45-50	50-55	55-60	60-65	65-70	70-80	80-90	90+	
Survey Total	14	9	60	97	199	434	715	765	446	178	57	15	2	1	2992
% Total	0.5%	0.3%	2.0%	3.2%	6.7%	14.5%	23.9%	25.6%	14.9%	5.9%	1.9%	0.5%	0.1%	0.0%	100%
Accumulated %	0.5%	0.8%	2.8%	6.0%	12.7%	27.2%	51.1%	76.6%	91.5%	97.5%	99.4%	99.9%	100.0%	100%	
Inverse Accum. %	99.5%	99.2%	97.2%	94.0%	87.3%	72.8%	48.9%	23.4%	8.5%	2.5%	0.6%	0.1%	0.0%	0.0%	
Average Speed	49 KM/H														



Site notes:

Arbutus Rd between Hobbs St and Telegraph Bay Rd

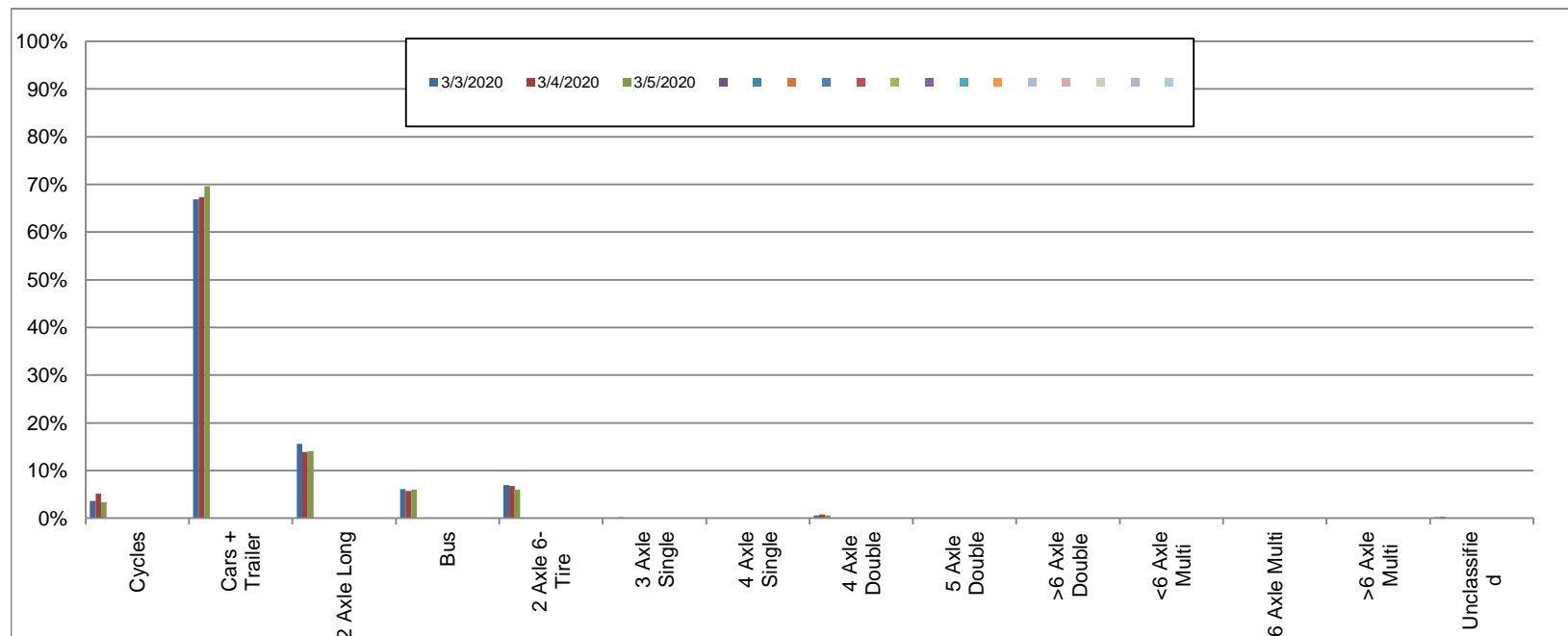
Northbound

March 3, 2020 to March 5, 2020

Daily Class Bin Percentages															Daily Class Bin Volumes															
Bin #	1	2	3	4	5	6	7	8	9	10	11	12	13	14	1	2	3	4	5	6	7	8	9	10	11	12	13	14	Total Volume	
Bin Class	Cycles	Cars + Trailer	2 Axle Long	Bus	2 Axle 6-Tire	3 Axle Single	4 Axle Single	4 Axle Double	5 Axle Double	>6 Axle Double	<6 Axle Multi	6 Axle Multi	>6 Axle Multi	Unclassified	Cycles	Cars + Trailer	2 Axle Long	Bus	2 Axle 6-Tire	3 Axle Single	4 Axle Single	4 Axle Double	5 Axle Double	>6 Axle Double	<6 Axle Multi	6 Axle Multi	>6 Axle Multi	Unclassified	Total Volume	
3/3/2020	3.6%	66.9%	15.6%	6.1%	7.0%	0.0%	0.0%	0.6%	0.0%	0.0%	0.0%	0.0%	0.0%	0.2%	41	756	176	69	79	0	0	7	0	0	0	0	0	0	2	1130
3/4/2020	5.1%	67.3%	13.8%	5.7%	6.7%	0.1%	0.1%	0.7%	0.0%	0.0%	0.0%	0.0%	0.0%	0.3%	62	812	167	69	81	1	1	9	0	0	0	0	0	0	4	1206
3/5/2020	3.4%	69.6%	14.1%	6.0%	6.0%	0.2%	0.1%	0.6%	0.0%	0.0%	0.0%	0.0%	0.0%	0.1%	38	787	159	68	68	2	1	7	0	0	0	0	0	0	1	1131
Total	4.1%	67.9%	14.5%	5.9%	6.6%	0.1%	0.1%	0.7%	0.0%	0.0%	0.0%	0.0%	0.0%	0.2%	141	2355	502	206	228	3	2	23	0	0	0	0	0	7	3467	

Class Data Summary

Bin #	1	2	3	4	5	6	7	8	9	10	11	12	13	14	Total Volume
Bin Class	Cycles	Cars + Trailer	2 Axle Long	Bus	2 Axle 6-Tire	3 Axle Single	4 Axle Single	4 Axle Double	5 Axle Double	>6 Axle Double	<6 Axle Multi	6 Axle Multi	>6 Axle Multi	Unclassified	Total Volume
Survey Total	141	2355	502	206	228	3	2	23	0	0	0	0	0	7	3467
% Total	4.1%	67.9%	14.5%	5.9%	6.6%	0.1%	0.1%	0.7%	0.0%	0.0%	0.0%	0.0%	0.0%	0.2%	100%
Accumulated %	4.1%	72.0%	86.5%	92.4%	99.0%	99.1%	99.1%	99.8%	99.8%	99.8%	99.8%	99.8%	99.8%	100.0%	
Inv. Accum. %	95.9%	28.0%	13.5%	7.6%	1.0%	0.9%	0.9%	0.2%	0.2%	0.2%	0.2%	0.2%	0.2%	0.0%	



Classification Descriptions

Bin #	Bin Description
1	Motorcycles
2	Passenger cars, including those with recreational trailers
3	2-axle pick-ups, vans, and RVs, including those with recreational trailers
4	Buses
5	2-axle, 6-tire single units
6	3-axle single units
7	4-axle single units
8	3-axle or 4-axle double unit
9	5-axle double unit
10	6-, 7-, or 8-axle double unit
11	5-axle multiple unit
12	6-axle multiple unit
13	7-or-more-axle multiple unit
14	Vehicles that could not be classified

Site notes:

Arbutus Rd between Hobbs St and Telegraph Bay Rd

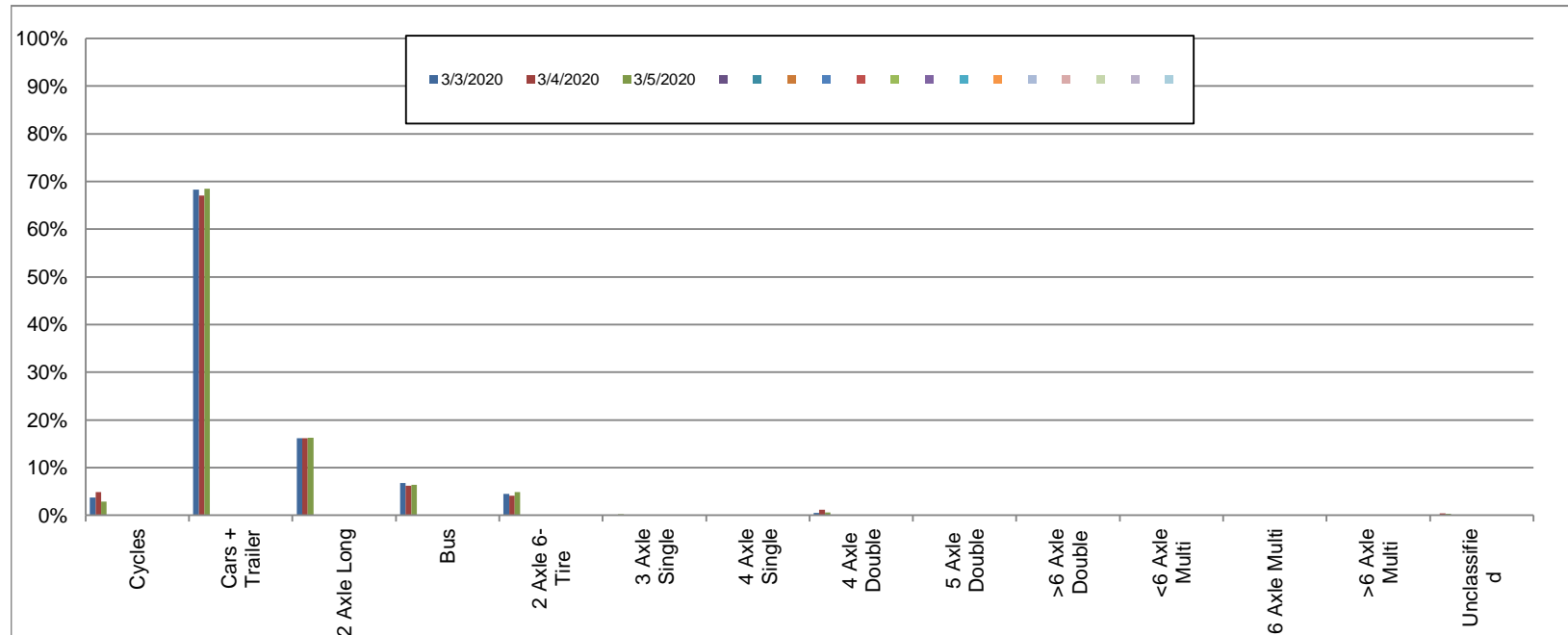
Southbound

March 3, 2020 to March 5, 2020

Daily Class Bin Percentages															Daily Class Bin Volumes															
Bin #	1	2	3	4	5	6	7	8	9	10	11	12	13	14	1	2	3	4	5	6	7	8	9	10	11	12	13	14	Total Volume	
Bin Class	Cycles	Cars + Trailer	2 Axle Long	Bus	2 Axle 6-Tire	3 Axle Single	4 Axle Single	4 Axle Double	5 Axle Double	>6 Axle Double	<6 Axle Multi	6 Axle Multi	>6 Axle Multi	Unclassified	Cycles	Cars + Trailer	2 Axle Long	Bus	2 Axle 6-Tire	3 Axle Single	4 Axle Single	4 Axle Double	5 Axle Double	>6 Axle Double	<6 Axle Multi	6 Axle Multi	>6 Axle Multi	Unclassified		
3/3/2020	3.7%	68.3%	16.2%	6.7%	4.5%	0.0%	0.0%	0.5%	0.0%	0.0%	0.0%	0.0%	0.0%	0.1%	35	651	154	64	43	0	0	5	0	0	0	0	0	0	1	953
3/4/2020	4.9%	67.1%	16.1%	6.2%	4.1%	0.0%	0.1%	1.2%	0.0%	0.0%	0.0%	0.0%	0.0%	0.4%	50	687	165	63	42	0	1	12	0	0	0	0	0	0	4	1024
3/5/2020	2.9%	68.5%	16.3%	6.4%	4.8%	0.2%	0.1%	0.6%	0.0%	0.0%	0.0%	0.0%	0.0%	0.3%	29	695	165	65	49	2	1	6	0	0	0	0	0	0	3	1015
Total	3.8%	67.9%	16.2%	6.4%	4.5%	0.1%	0.1%	0.8%	0.0%	0.0%	0.0%	0.0%	0.0%	0.3%	114	2033	484	192	134	2	2	23	0	0	0	0	0	8	2992	

Class Data Summary

Bin #	1	2	3	4	5	6	7	8	9	10	11	12	13	14	Total Volume
Bin Class	Cycles	Cars + Trailer	2 Axle Long	Bus	2 Axle 6-Tire	3 Axle Single	4 Axle Single	4 Axle Double	5 Axle Double	>6 Axle Double	<6 Axle Multi	6 Axle Multi	>6 Axle Multi	Unclassified	Total Volume
Survey Total	114	2033	484	192	134	2	2	23	0	0	0	0	0	8	2992
% Total	3.8%	67.9%	16.2%	6.4%	4.5%	0.1%	0.1%	0.8%	0.0%	0.0%	0.0%	0.0%	0.0%	0.3%	100%
Accumulated %	3.8%	71.8%	87.9%	94.4%	98.8%	98.9%	99.0%	99.7%	99.7%	99.7%	99.7%	99.7%	99.7%	100.0%	
Inv. Accum. %	96.2%	28.2%	12.1%	5.6%	1.2%	1.1%	1.0%	0.3%	0.3%	0.3%	0.3%	0.3%	0.3%	0.0%	



Classification Descriptions

Bin #	Bin Description
1	Motorcycles
2	Passenger cars, including those with recreational trailers
3	2-axle pick-ups, vans, and RVs, including those with recreational trailers
4	Buses
5	2-axle, 6-tire single units
6	3-axle single units
7	4-axle single units
8	3-axle or 4-axle double unit
9	5-axle double unit
10	6-, 7-, or 8-axle double unit
11	5-axle multiple unit
12	6-axle multiple unit
13	7-or-more-axle multiple unit
14	Vehicles that could not be classified

Site notes: